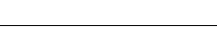
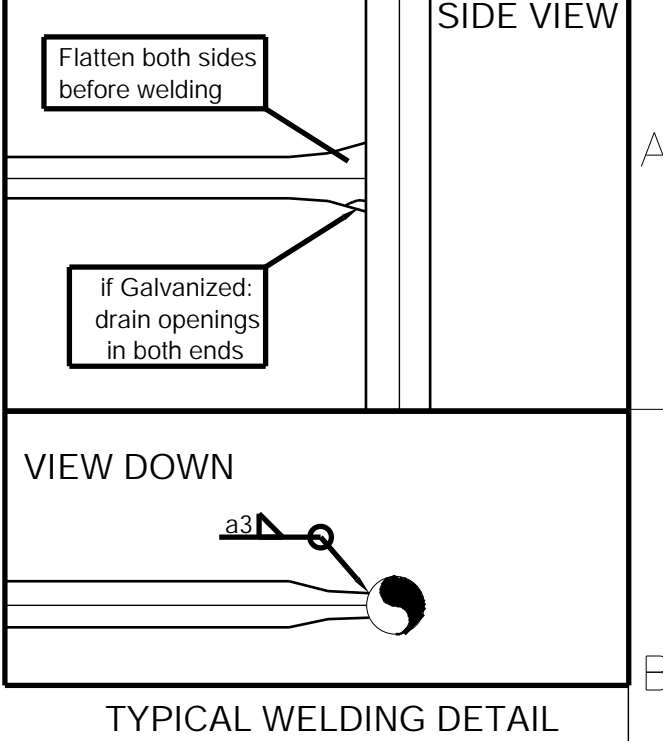
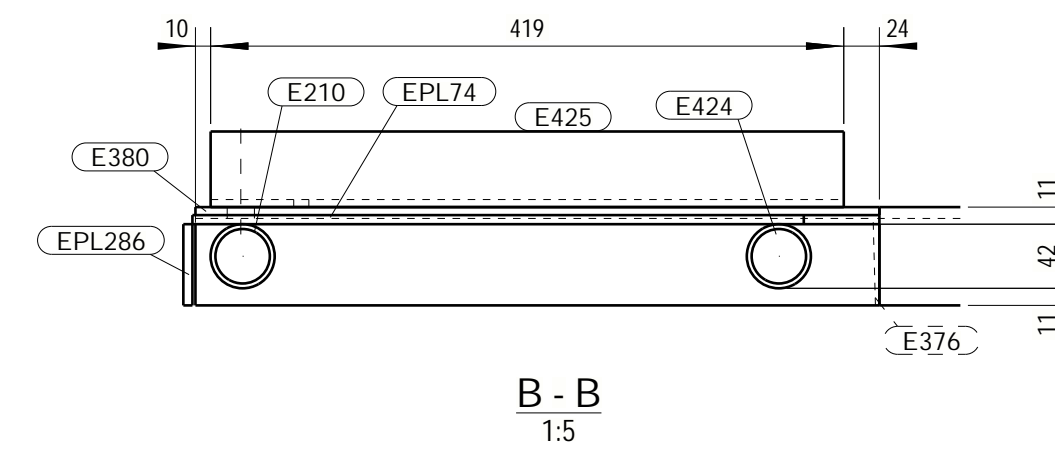
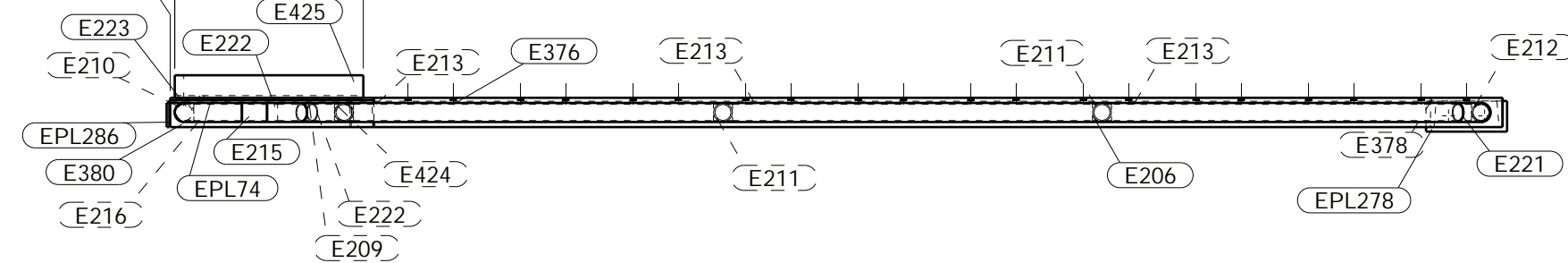


ASSEMBLYCODE	QTY
EIE23 @ 7-8/D-E	1

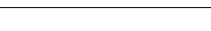
GENERAL NOTES:		HANDRAIL BENDING R-128, pipes center-line UNMARKED WELDS a3 mm F.W. UNLESS NOTED				
MATERIAL LIST FOR ONE ASSEMBLY MK'D		EIE23			1 Total Pcs.	
Mark	Size	Grade	Pcs.	Length	Area	Weight
E206	CFCHS42.4*3.2	S235JR	1	3203	0.4	9.9
E209	CFCHS42.4*3.2	S235JR	1	78	0.0	0.2
E210	CFCHS42.4*3.2	S235JR	1	991	0.1	3.1
E211	CFCHS42.4*3.2	S235JR	2	979	0.3	6.1
E212	CFCHS42.4*3.2	S235JR	1	925	0.1	2.9
E213	CFCHS42.4*3.2	S235JR	3	1029	0.4	9.5
E214	L50*50*5	S355J2	1	419	0.1	1.5
E215	CFCHS42.4*3.2	S235JR	1	56	0.0	0.2
E216	CFCHS42.4*3.2	S235JR	1	186	0.0	0.6
E221	CFCHS42.4*3.2	S235JR	1	119	0.0	0.4
E222	CFCHS42.4*3.2	S235JR	1	82	0.0	0.3
E375	UNP160	S355J2	1	3126	1.7	58.9
E377	UNP160	S355J2	1	140	0.1	2.6
E379	UNP160	S355J2	1	452	0.2	8.5
E382	CFCHS42.4*3.2	S235JR	1	82	0.0	0.3
E383	CFCHS42.4*3.2	S235JR	1	201	0.0	0.6
E424	CFCHS42.4*3.2	S235JR	1	1012	0.1	3.1
EPL74	PL6*120	S355J2	1	454	0.1	2.5
EPL235	PL6*120	S355J2	1	63	0.0	0.4
EPL278	PL12*68	S355J2	1	180	0.0	1.2
				Total	3.9 m <sup>2</sup>	112.6 kg

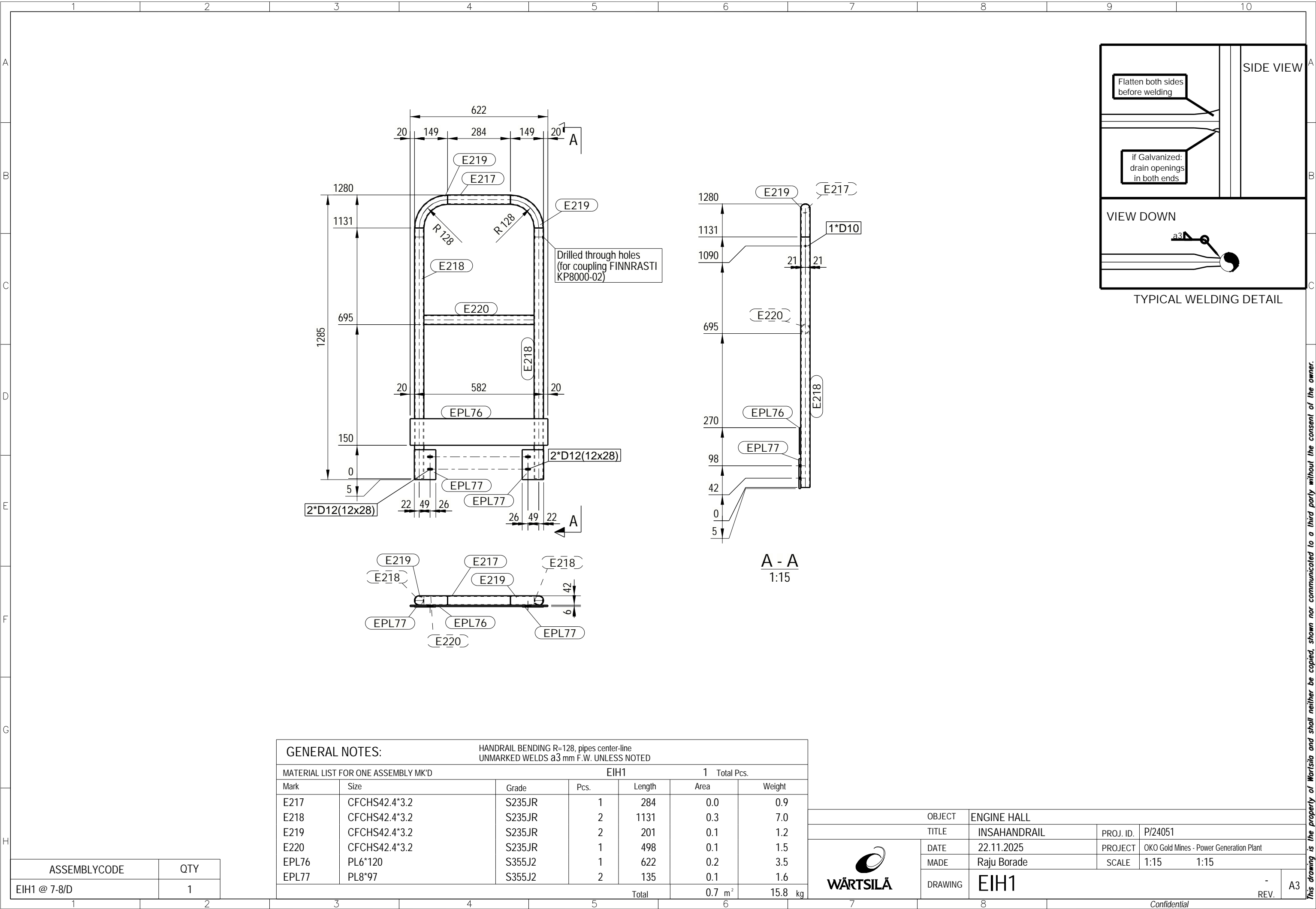
	OBJECT	ENGINE HALL			
	TITLE	INSAELEMINT	PROJ. ID.	P/24051	
	DATE	22.11.2025	PROJECT	OKO Gold Mines - Power Generation Plant	
	MADE	Raju Borade	SCALE	1:5	1:10
	DRAWING	EIE23			- REV. A1



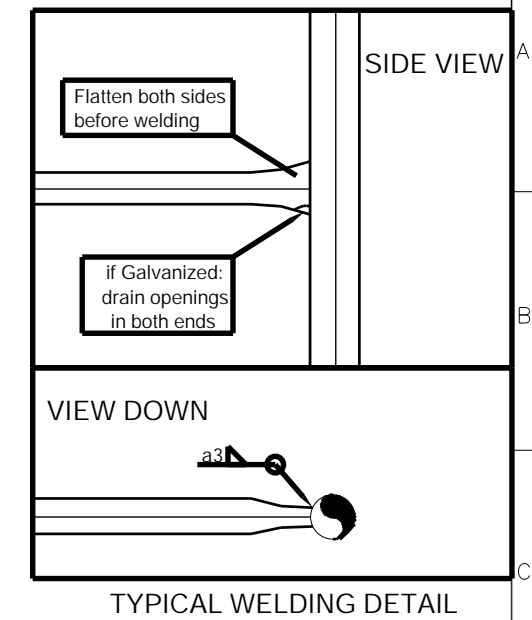
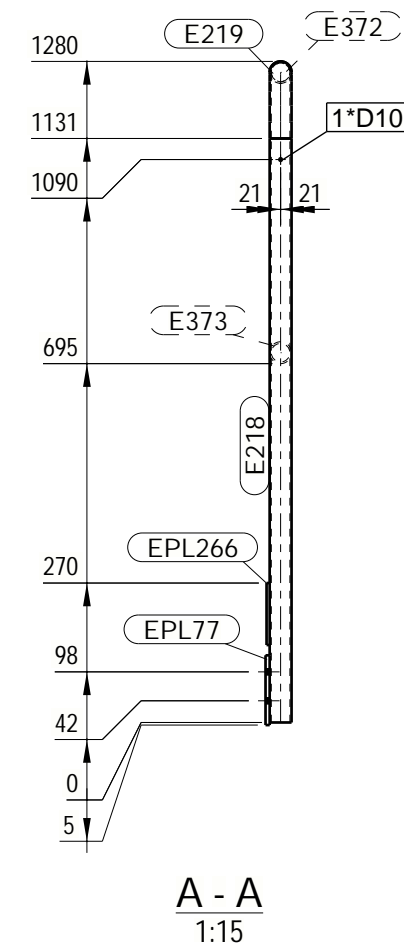
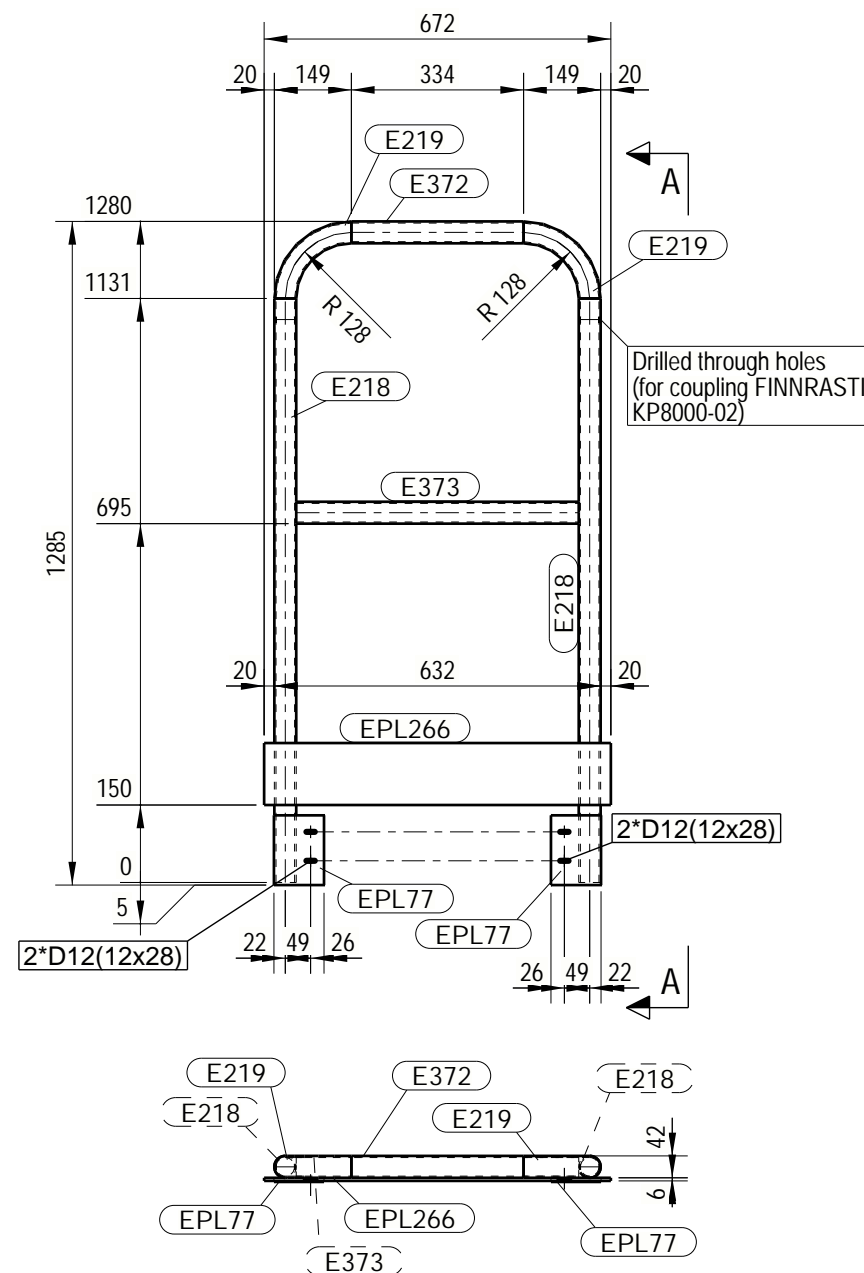
ASSEMBLYCODE	QTY
EIE24 @ 7-8/D-E	1

GENERAL NOTES:		HANDRAIL BENDING R=128, pipes center-line UNMARKED WELDS a3 mm F.W. UNLESS NOTED				
MATERIAL LIST FOR ONE ASSEMBLY MK'D		EIE24			1 Total Pcs.	
Mark	Size	Grade	Pcs.	Length	Area	Weight
E206	CFCHS42.4*3.2	S235JR	1	3203	0.4	9.9
E209	CFCHS42.4*3.2	S235JR	1	78	0.0	0.2
E210	CFCHS42.4*3.2	S235JR	1	991	0.1	3.1
E211	CFCHS42.4*3.2	S235JR	2	979	0.3	6.1
E212	CFCHS42.4*3.2	S235JR	1	925	0.1	2.9
E213	CFCHS42.4*3.2	S235JR	3	1029	0.4	9.5
E215	CFCHS42.4*3.2	S235JR	1	56	0.0	0.2
E216	CFCHS42.4*3.2	S235JR	1	186	0.0	0.6
E221	CFCHS42.4*3.2	S235JR	1	119	0.0	0.4
E222	CFCHS42.4*3.2	S235JR	2	82	0.0	0.5
E223	CFCHS42.4*3.2	S235JR	1	201	0.0	0.6
E376	UNP160	S355J2	1	3126	1.7	58.9
E378	UNP160	S355J2	1	140	0.1	2.6
E380	UNP160	S355J2	1	452	0.2	8.5
E424	CFCHS42.4*3.2	S235JR	1	1012	0.1	3.1
E425	L50*50*5	S355J2	1	419	0.1	1.5
EPL74	PL6*120	S355J2	1	454	0.1	2.5
EPL278	PL12*68	S355J2	1	180	0.0	1.2
EPL286	PL6*120	S355J2	1	54	0.0	0.3
Total					3.9 m <sup>2</sup>	112.6 kg


	OBJECT	ENGINE HALL		
	TITLE	INSALEMENT	PROJ. ID.	P/24051
	DATE	22.11.2025	PROJECT	OKO Gold Mines - Power Generation Plant
	MADE	Raju Borade	SCALE	1:5 1:10
	DRAWING	EIE24		
			- REV.	A1



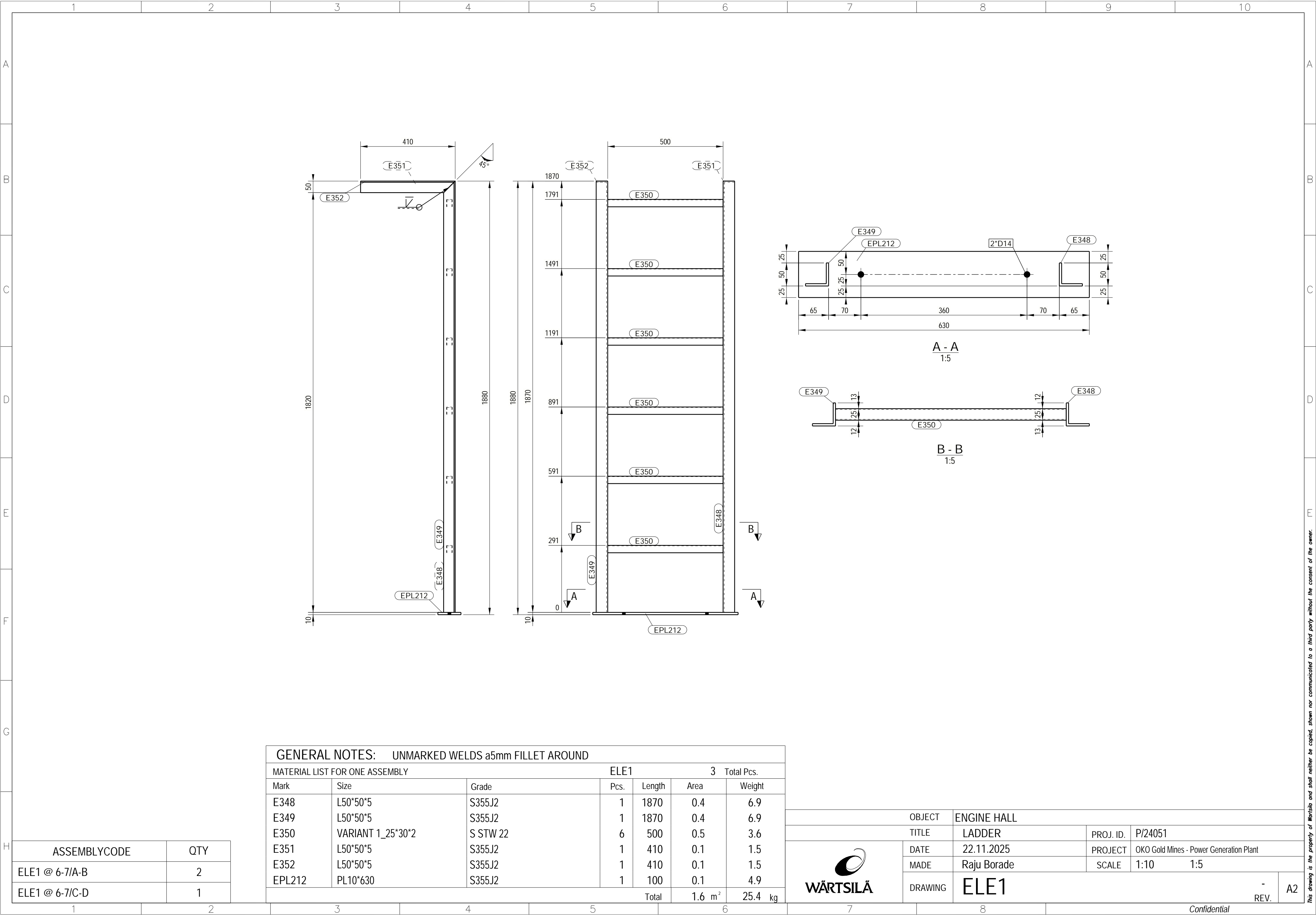




GENERAL NOTES:		HANDRAIL BENDING R=128, pipes center-line UNMARKED WELDS a3 mm F.W. UNLESS NOTED				
MATERIAL LIST FOR ONE ASSEMBLY MK'D			EIH2		1 Total Pcs.	
Mark	Size	Grade	Pcs.	Length	Area	Weight
E218	CFCHS42.4*3.2	S235JR	2	1131	0.3	7.0
E219	CFCHS42.4*3.2	S235JR	2	201	0.1	1.2
E372	CFCHS42.4*3.2	S235JR	1	334	0.0	1.0
E373	CFCHS42.4*3.2	S235JR	1	547	0.1	1.7
EPL77	PL8*97	S355J2	2	135	0.1	1.6
EPL266	PL6*120	S355J2	1	672	0.2	3.8
				Total	0.7 m²	16.4 kg


OBJECT		ENGINE HALL			
TITLE		INSAHANDRAIL	PROJ. ID.	P/24051	
 <b>WÄRTSILÄ</b>	DATE	22.11.2025	PROJECT	OKO Gold Mines - Power Generation Plant	
	MADE	Raju Borade	SCALE	1:15	1:15
	DRAWING	EIH2			- REV.

*This drawing is the property of Wartsila and shall neither be copied, shown nor communicated to a third party without the consent of the owner.*



GENERAL NOTES: UNMARKED WELDS a5mm FILLET AROUND						
MATERIAL LIST FOR ONE ASSEMBLY			ELE1		3 Total Pcs.	
Mark	Size	Grade	Pcs.	Length	Area	Weight
E348	L50*50*5	S355J2	1	1870	0.4	6.9
E349	L50*50*5	S355J2	1	1870	0.4	6.9
E350	VARIANT 1_25*30*2	S STW 22	6	500	0.5	3.6
E351	L50*50*5	S355J2	1	410	0.1	1.5
E352	L50*50*5	S355J2	1	410	0.1	1.5
EPL212	PL10*630	S355J2	1	100	0.1	4.9
Total					1.6 m²	25.4 kg

ASSEMBLYCODE	QTY
ELE1 @ 6-7/A-B	2
ELE1 @ 6-7/C-D	1

		OBJECT	ENGINE HALL			
		TITLE	LADDER	PROJ. ID.	P/24051	
	DATE	22.11.2025	PROJECT	OKO Gold Mines - Power Generation Plant		
	MADE	Raju Borade	SCALE	1:10	1:5	
	DRAWING	ELE1			- REV.	A2

This drawing is the property of Wärtsilä and shall neither be copied, shown nor communicated to a third party without the consent of the owner.