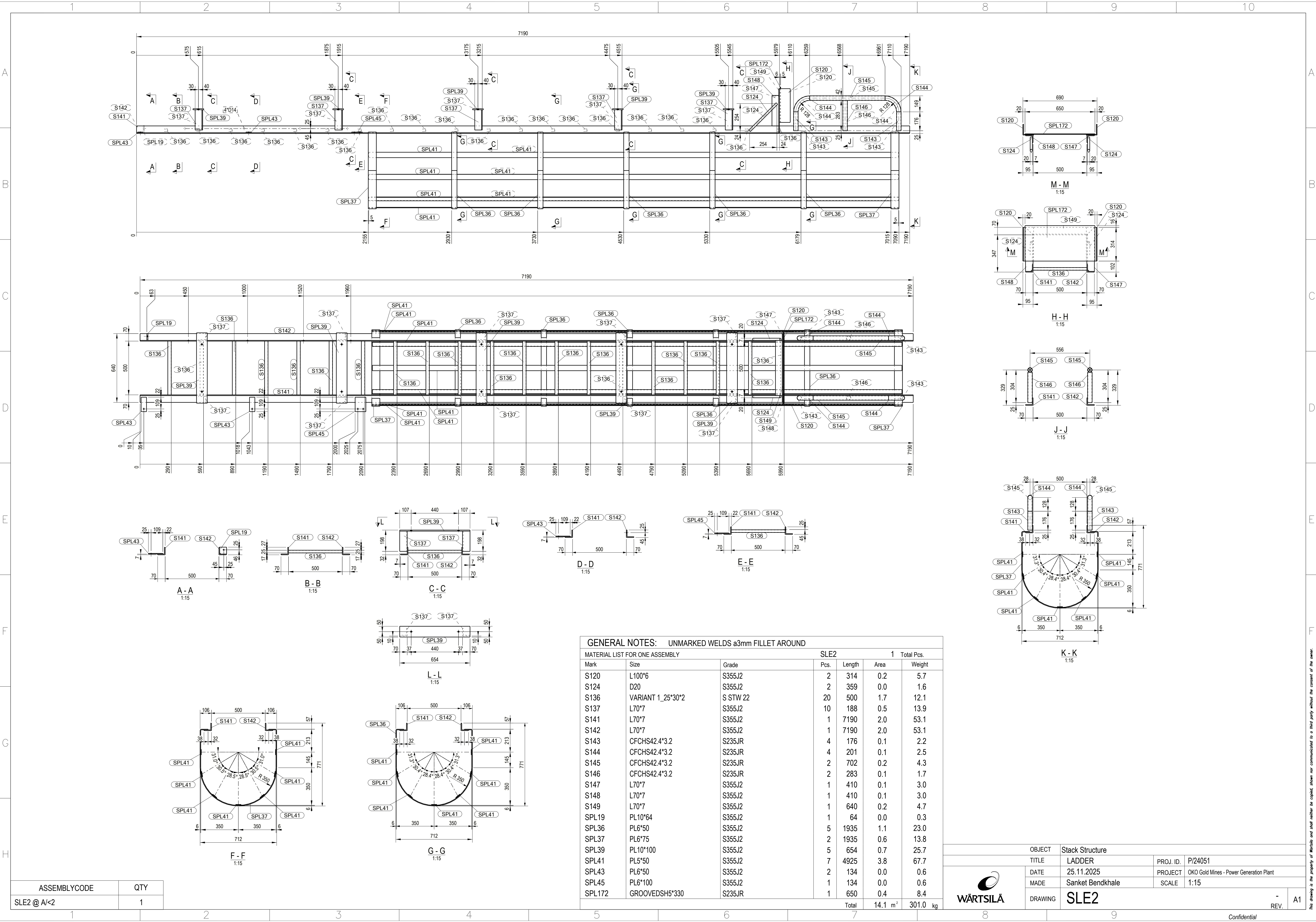


ASSEMBLYCODE	QTY
SLE1 @ A/2	1

GENERAL NOTES: UNMARKED WELDS a3mm FILLET AROUND						
MATERIAL LIST FOR ONE ASSEMBLY			SLE1			
Mark	Size	Grade	Pcs.	Length	Area	Weight
S136	VARIANT 1_25*30*2	S STW 22	27	500	2.4	16.4
S137	L70*7	S355J2	12	188	0.6	16.6
S138	L70*7	S355J2	1	7920	2.2	58.4
S139	L70*7	S355J2	1	7920	2.2	58.4
SPL19	PL10*64	S355J2	2	64	0.0	0.6
SPL36	PL6*50	S355J2	3	1935	0.7	13.8
SPL37	PL6*75	S355J2	2	1935	0.6	13.8
SPL39	PL10*100	S355J2	6	654	0.9	30.8
SPL40	PL5*50	S355J2	7	3490	2.7	47.9
SPL43	PL6*50	S355J2	4	134	0.1	1.3
SPL45	PL6*100	S355J2	2	134	0.1	1.3
Total					12.3 m ²	259.4 kg

OBJECT		Stack Structure	
TITLE		LADDER	PROJ. ID. P/24051
DATE		25.11.2025	PROJECT OKO Gold Mines - Power Generation Plant
MADE		Sanket Bendkhale	SCALE 1:15
DRAWING		SLE1	- REV. A1

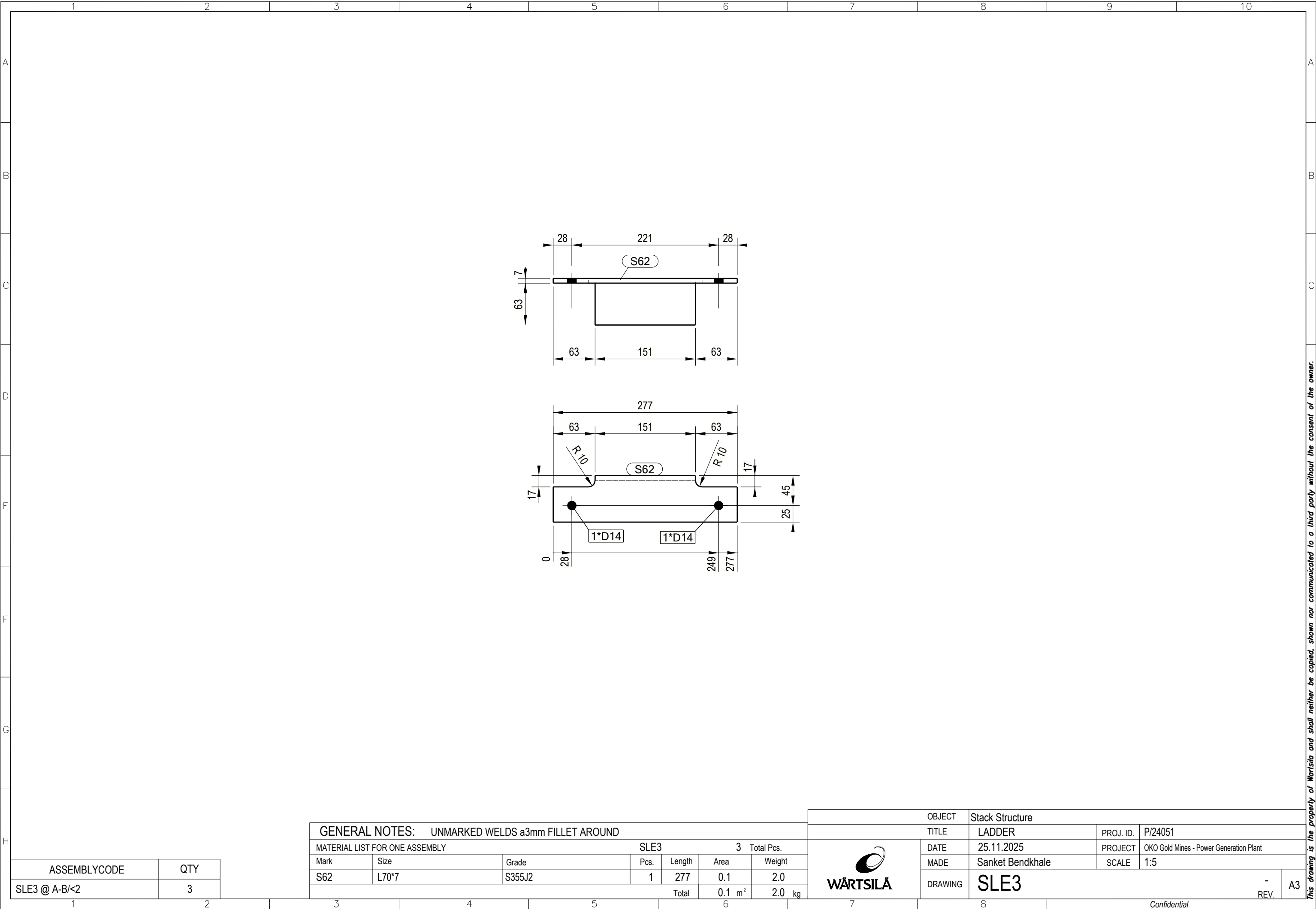




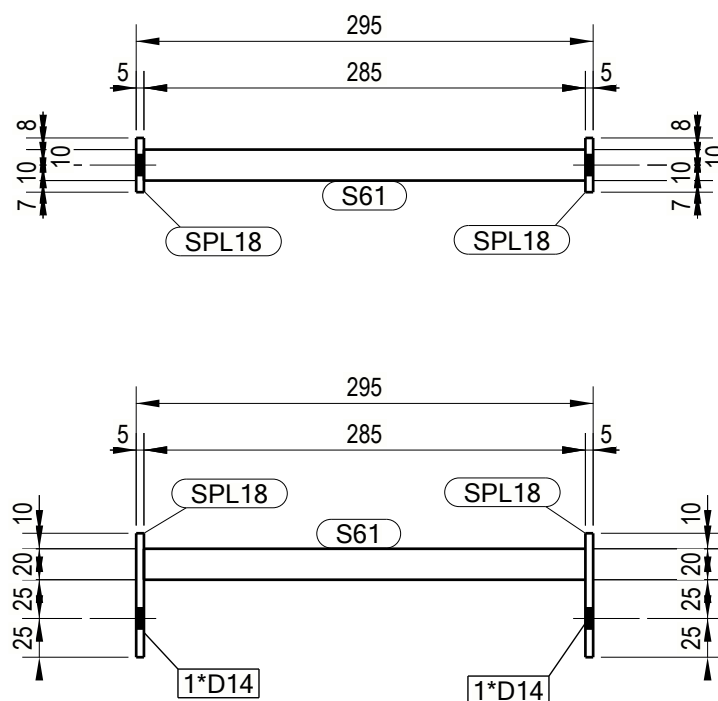
GENERAL NOTES: UNMARKED WELDS a3mm FILLET AROUND						
MATERIAL LIST FOR ONE ASSEMBLY			SLE2			
Mark	Size	Grade	Pcs.	Length	Area	Weight
S120	L100*6	S355J2	2	314	0.2	5.7
S124	D20	S355J2	2	359	0.0	1.6
S136	VARIANT 1_25*30*2	S STW 22	20	500	1.7	12.1
S137	L70*7	S355J2	10	188	0.5	13.9
S141	L70*7	S355J2	1	7190	2.0	53.1
S142	L70*7	S355J2	1	7190	2.0	53.1
S143	CFCHS42.4*3.2	S235JR	4	176	0.1	2.2
S144	CFCHS42.4*3.2	S235JR	4	201	0.1	2.5
S145	CFCHS42.4*3.2	S235JR	2	702	0.2	4.3
S146	CFCHS42.4*3.2	S235JR	2	283	0.1	1.7
S147	L70*7	S355J2	1	410	0.1	3.0
S148	L70*7	S355J2	1	410	0.1	3.0
S149	L70*7	S355J2	1	640	0.2	4.7
SPL19	PL10*64	S355J2	1	64	0.0	0.3
SPL36	PL6*50	S355J2	5	1935	1.1	23.0
SPL37	PL6*75	S355J2	2	1935	0.6	13.8
SPL39	PL10*100	S355J2	5	654	0.7	25.7
SPL41	PL5*50	S355J2	7	4925	3.8	67.7
SPL43	PL6*50	S355J2	2	134	0.0	0.6
SPL45	PL6*100	S355J2	1	134	0.0	0.6
SPL172	GROOVEDSH5*330	S235JR	1	650	0.4	8.4
Total					14.1 m ²	301.0 kg




OBJECT		Stack Structure	
TITLE		PROJ. ID.	P/24051
DATE		25.11.2025	PROJECT OKO Gold Mines - Power Generation Plant
MADE		Sanket Bendkhale	SCALE 1:15
DRAWING		SLE2	



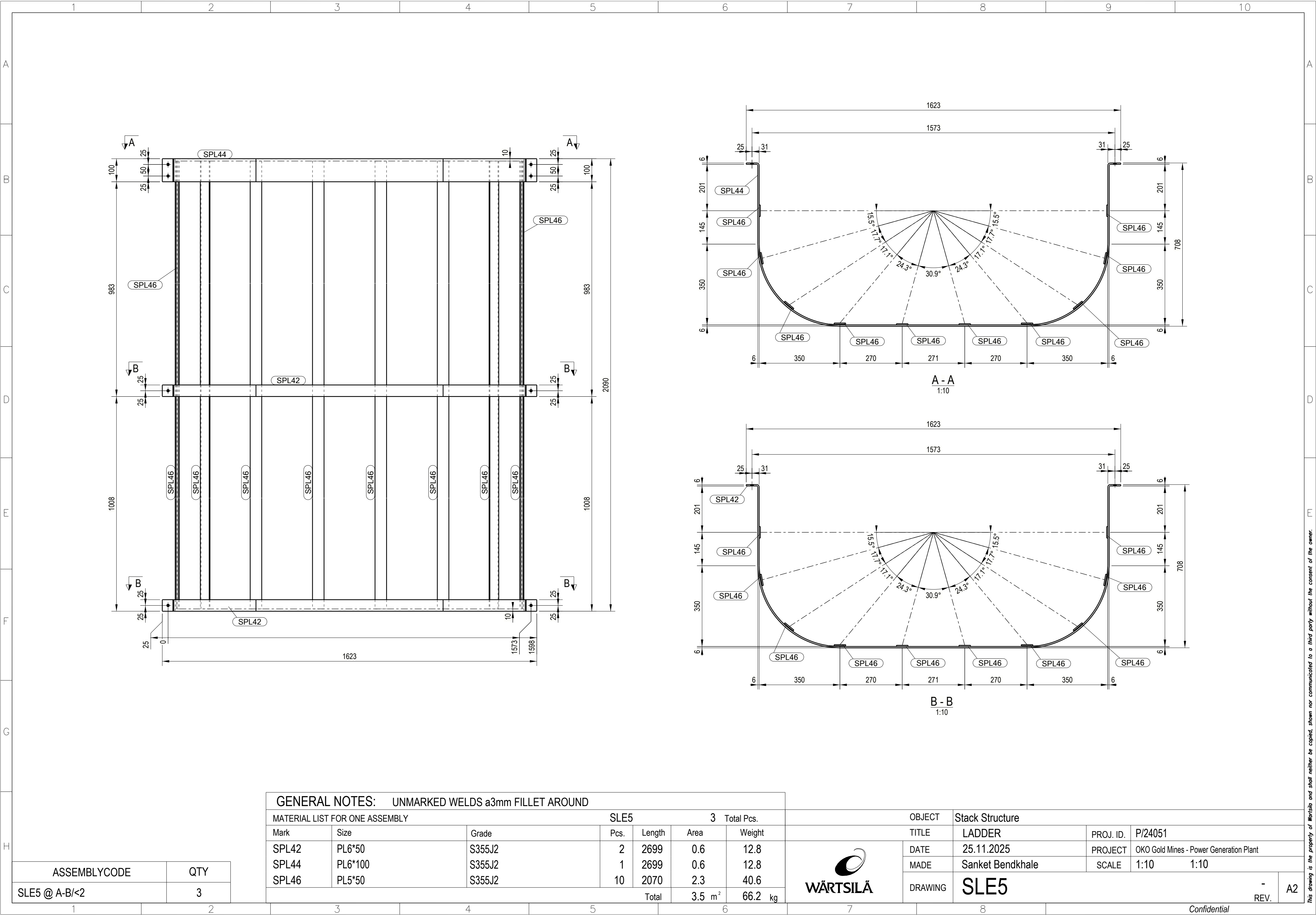
This drawing is the property of Wartsila and shall neither be copied, shown nor communicated to a third party without the consent of the owner.

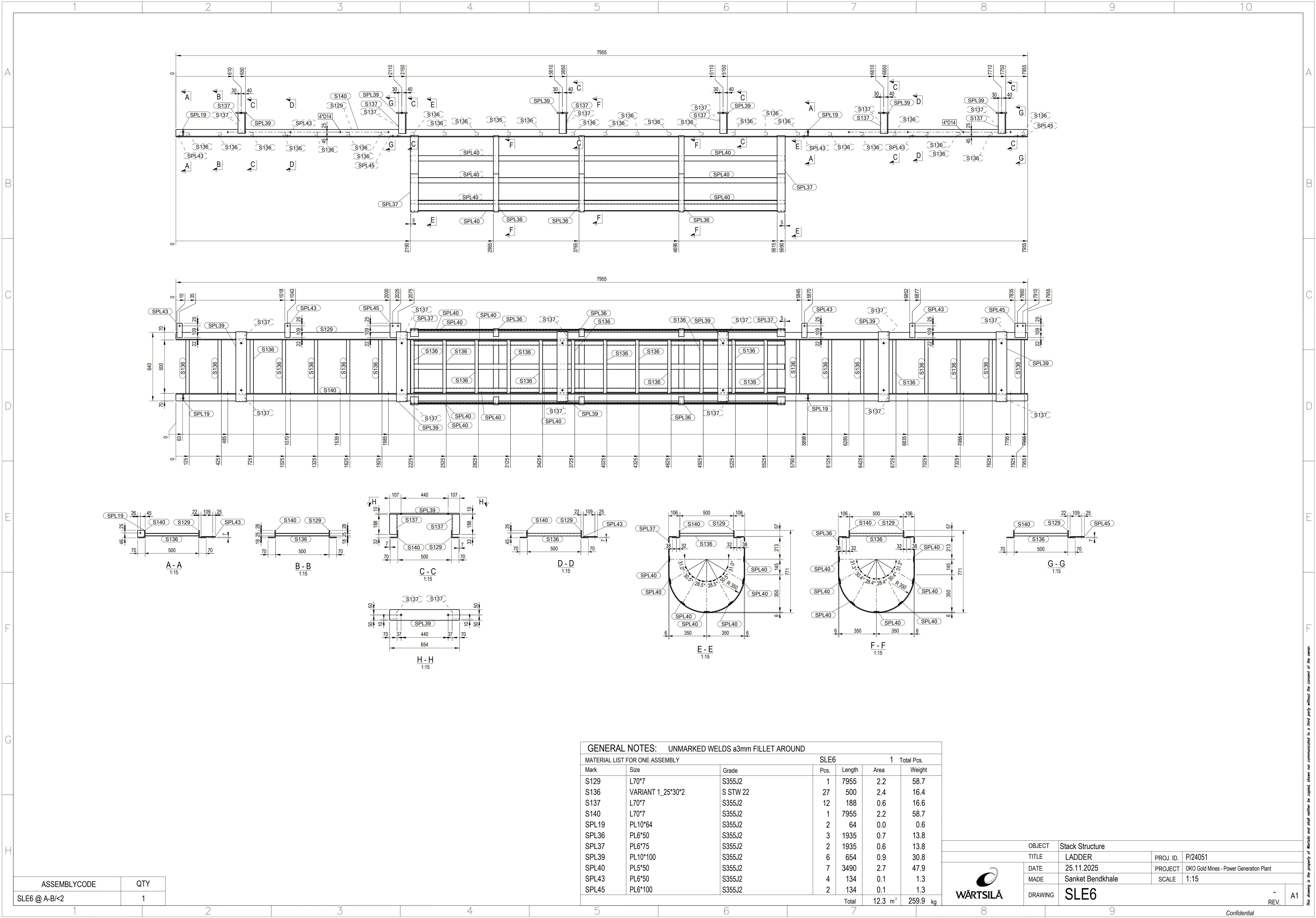


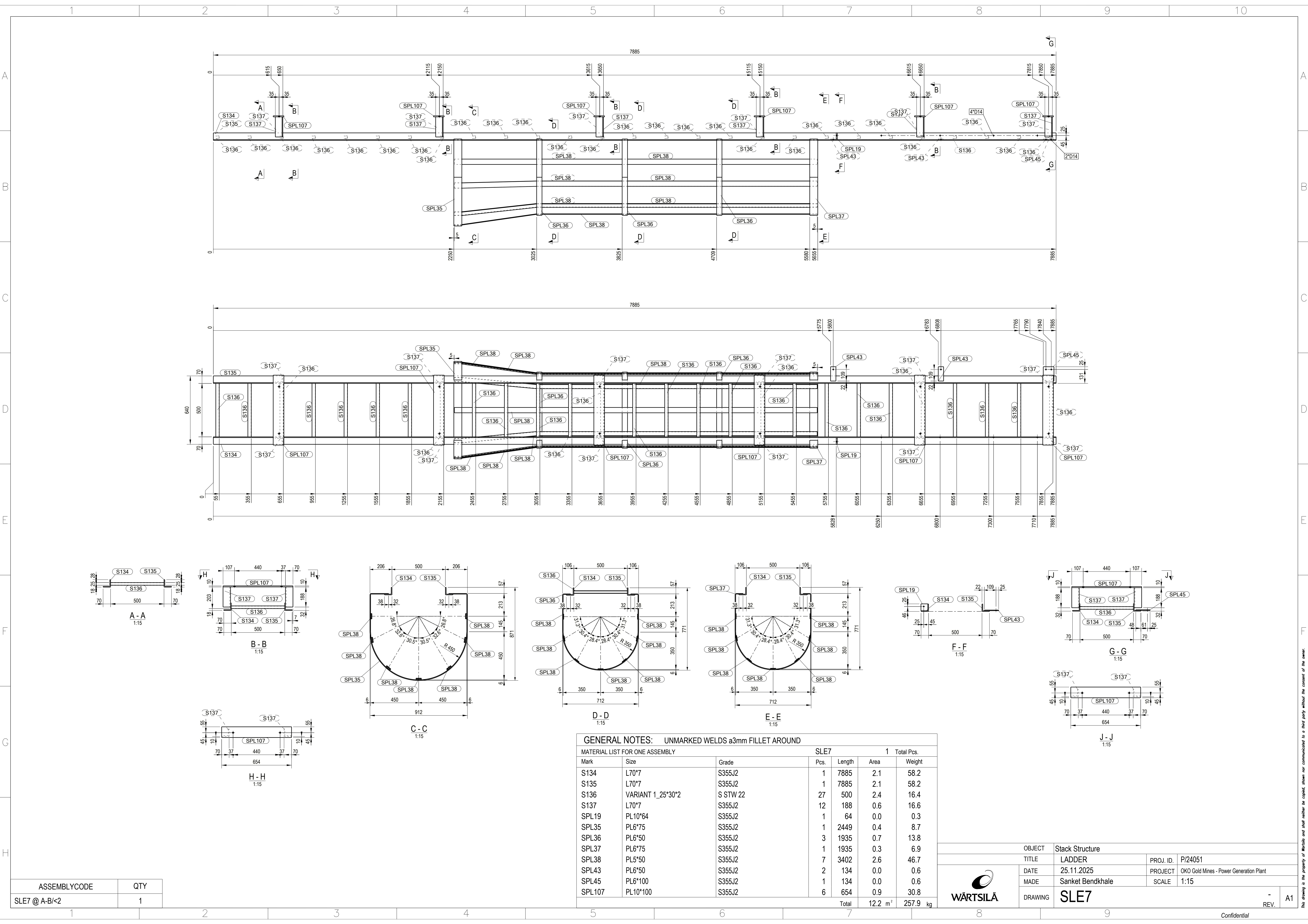
GENERAL NOTES: UNMARKED WELDS a3mm FILLET AROUND						
MATERIAL LIST FOR ONE ASSEMBLY			SLE4		12	Total Pcs.
Mark	Size	Grade	Pcs.	Length	Area	Weight
S61	D20	S355J2	1	285	0.0	0.6
SPL18	PL5*80	S355J2	2	35	0.0	0.2
Total					0.0 m ²	0.9 kg

	OBJECT	Stack Structure		
	TITLE	LADDER	PROJ. ID.	P/24051
	DATE	25.11.2025	PROJECT	OKO Gold Mines - Power Generation Plant
	MADE	Sanket Bendkhale	SCALE	1:5
	DRAWING	SLE4		
				- REV.
				A3

8. This drawing is the property of Warlsita and shall neither be copied, shown nor communicated to a third party without the consent of the owner.



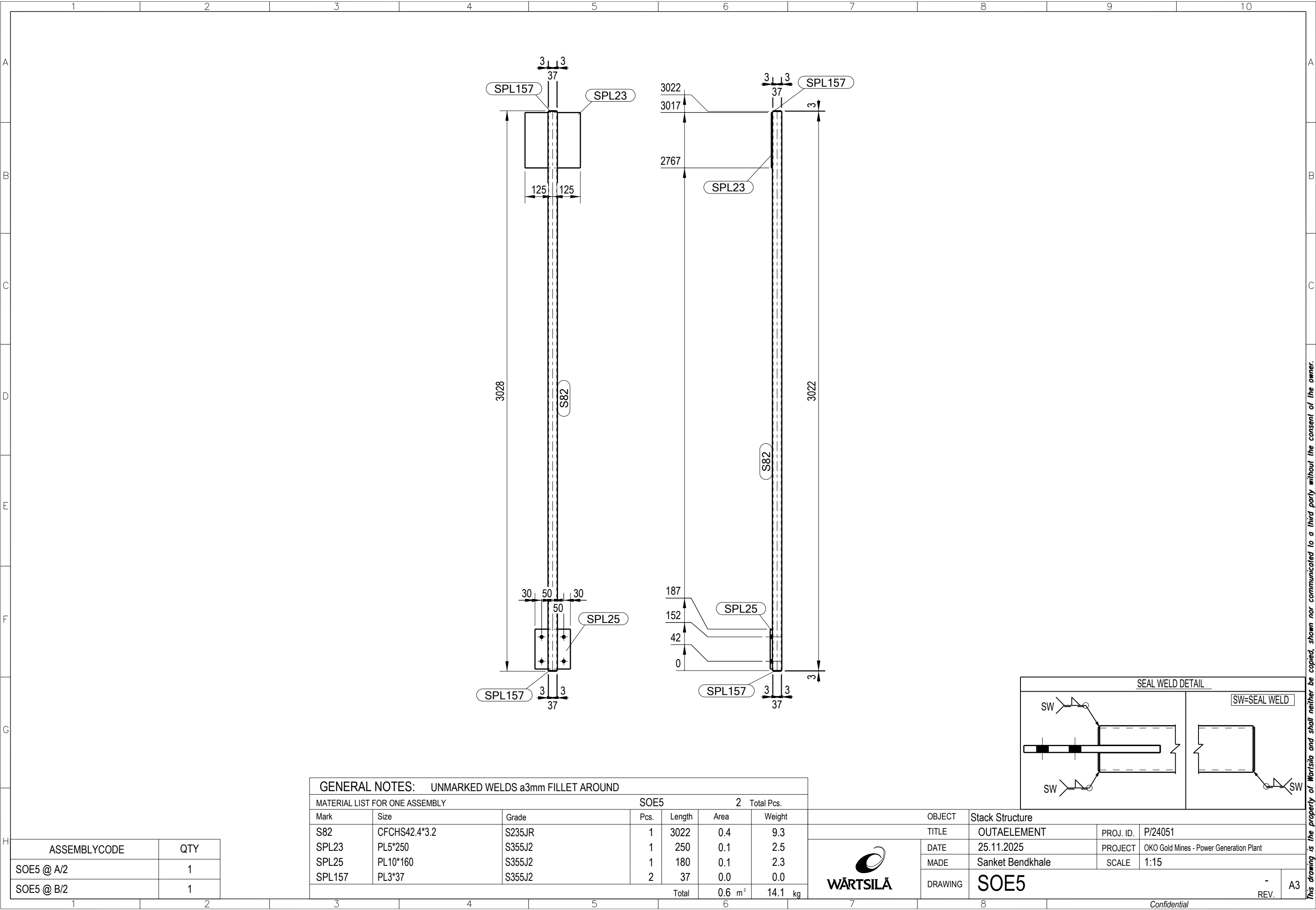


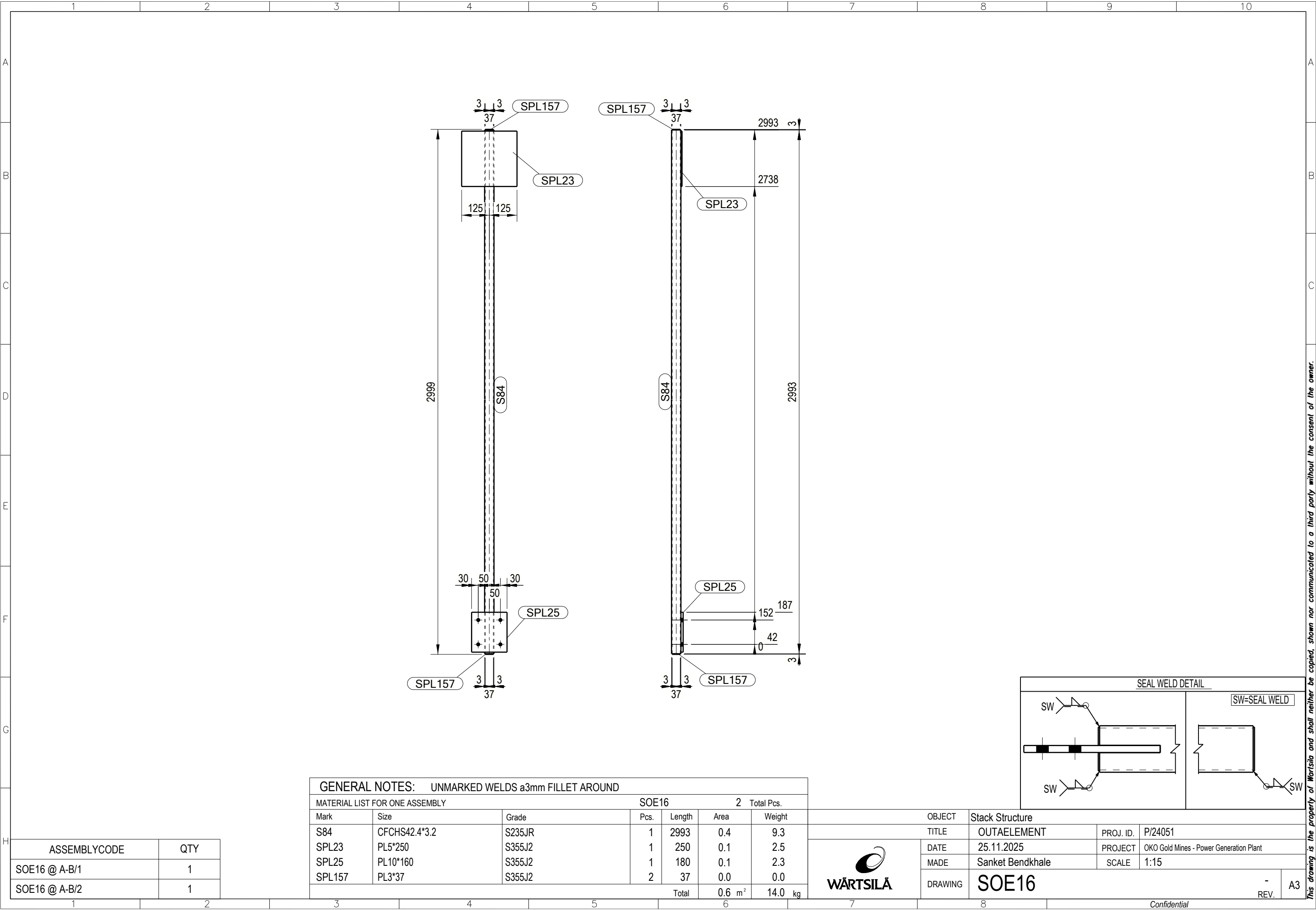


ASSEMBLYCODE	QTY
SLE7 @ A-B/<2	1

GENERAL NOTES: UNMARKED WELDS a3mm FILLET AROUND						
MATERIAL LIST FOR ONE ASSEMBLY			SLE7			
Mark	Size	Grade	Pcs.	Length	Area	Total Pcs.
S134	L70*7	S355J2	1	7885	2.1	58.2
S135	L70*7	S355J2	1	7885	2.1	58.2
S136	VARIANT 1_25*30*2	S STW 22	27	500	2.4	16.4
S137	L70*7	S355J2	12	188	0.6	16.6
SPL19	PL10*64	S355J2	1	64	0.0	0.3
SPL35	PL6*75	S355J2	1	2449	0.4	8.7
SPL36	PL6*50	S355J2	3	1935	0.7	13.8
SPL37	PL6*75	S355J2	1	1935	0.3	6.9
SPL38	PL5*50	S355J2	7	3402	2.6	46.7
SPL43	PL6*50	S355J2	2	134	0.0	0.6
SPL45	PL6*100	S355J2	1	134	0.0	0.6
SPL107	PL10*100	S355J2	6	654	0.9	30.8
Total					12.2 m ²	257.9 kg

	OBJECT	Stack Structure		
	TITLE	LADDER	PROJ. ID.	P/24051
	DATE	25.11.2025	PROJECT	OKO Gold Mines - Power Generation Plant
	MADE	Sanket Bendkhale	SCALE	1:15
DRAWING	SLE7		REV.	A1

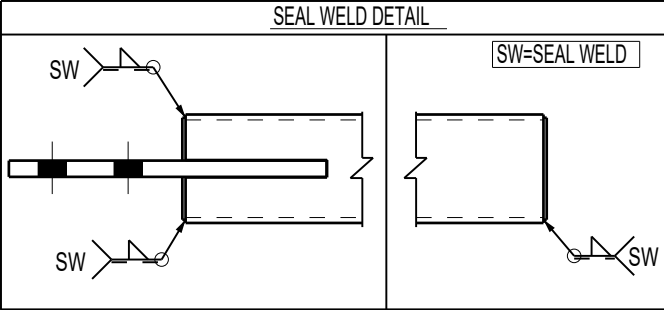




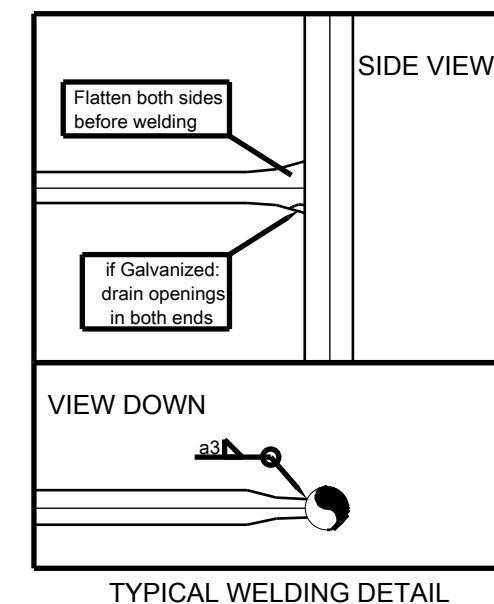
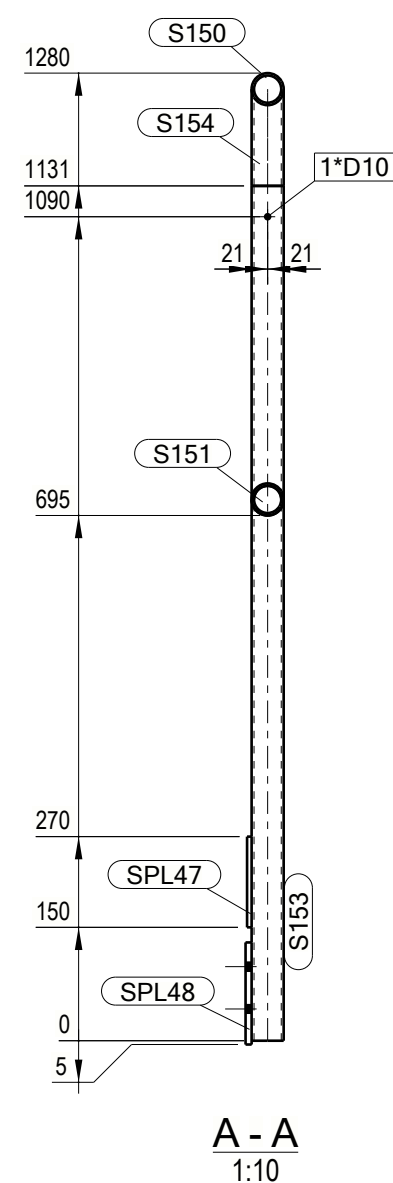
GENERAL NOTES: UNMARKED WELDS a3mm FILLET AROUND						
MATERIAL LIST FOR ONE ASSEMBLY				SOE16 2 Total Pcs.		
Mark	Size	Grade	Pcs.	Length	Area	Weight
S84	CFCHS42.4*3.2	S235JR	1	2993	0.4	9.3
SPL23	PL5*250	S355J2	1	250	0.1	2.5
SPL25	PL10*160	S355J2	1	180	0.1	2.3
SPL157	PL3*37	S355J2	2	37	0.0	0.0
				Total	0.6 m²	14.0 kg

ASSEMBLYCODE	QTY
SOE16 @ A-B/1	1
SOE16 @ A-B/2	1


OBJECT	Stack Structure		
	TITLE	PROJ. ID.	P/24051
	DATE	PROJECT	OKO Gold Mines - Power Generation Plant
	MADE	SCALE	1:15
DRAWING	SOE16		
			-
			REV.
			A3



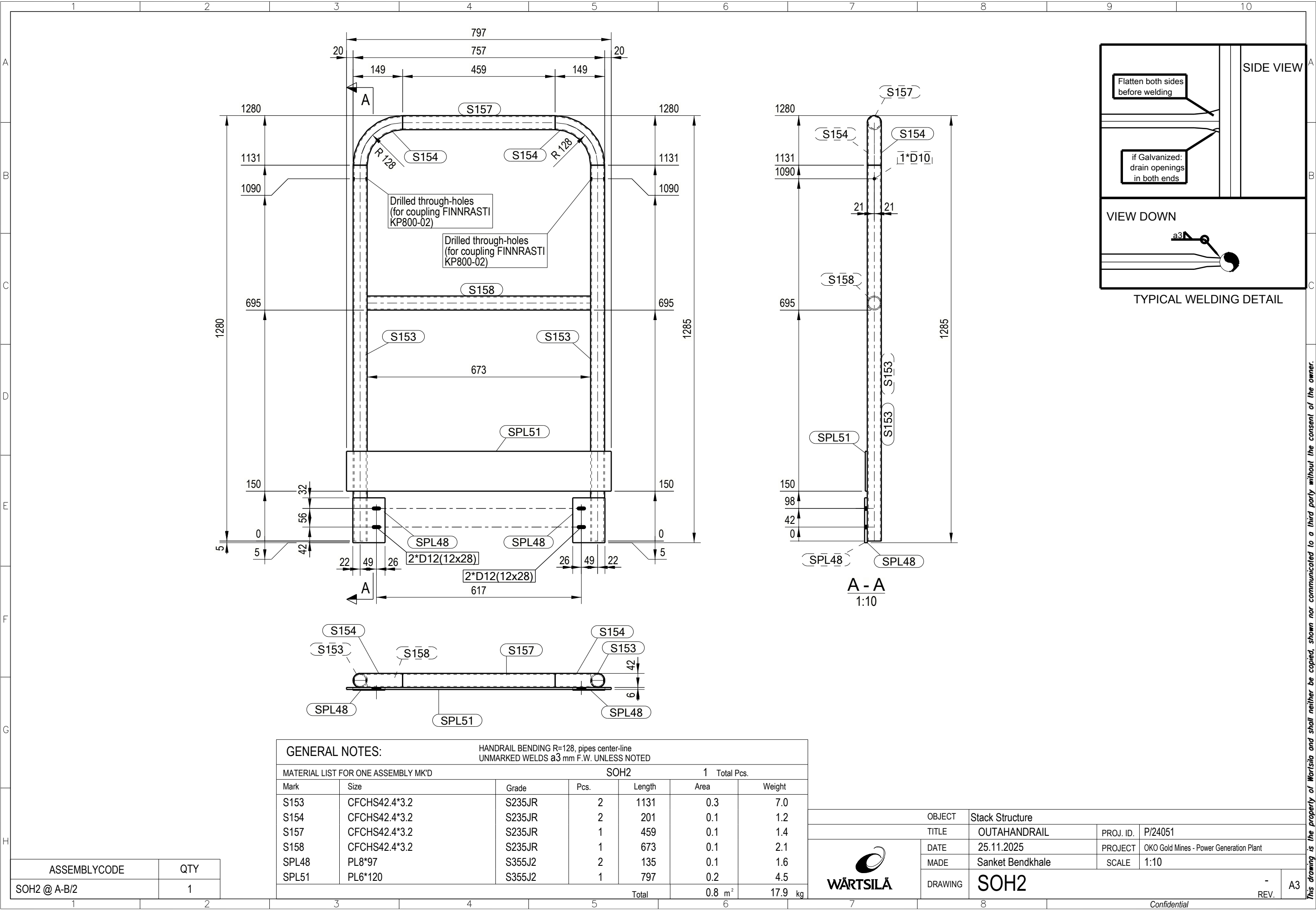
This drawing is the property of Wartsila and shall neither be copied, shown nor communicated to a third party without the consent of the owner.



GENERAL NOTES:		HANDRAIL BENDING R=128, pipes center-line UNMARKED WELDS a3 mm F.W. UNLESS NOTED				
MATERIAL LIST FOR ONE ASSEMBLY MK'D			SOH1		2 Total Pcs.	
Mark	Size	Grade	Pcs.	Length	Area	Weight
S150	CFCHS42.4*3.2	S235JR	1	1549	0.2	4.8
S151	CFCHS42.4*3.2	S235JR	2	860	0.2	5.3
S152	CFCHS42.4*3.2	S235JR	1	1238	0.2	3.8
S153	CFCHS42.4*3.2	S235JR	2	1131	0.3	7.0
S154	CFCHS42.4*3.2	S235JR	2	201	0.1	1.2
SPL47	PL6*120	S355J2	1	1887	0.5	10.7
SPL48	PL8*97	S355J2	2	135	0.1	1.6
SPL49	PL8*150	S355J2	1	135	0.0	1.3
				Total	1.5 m ²	35.8 kg

		OBJECT	Stack Structure			
		TITLE	OUTAHANDRAIL	PROJ. ID.	P/24051	
 WÄRTSILÄ	DATE	25.11.2025	PROJECT	OKO Gold Mines - Power Generation Plant		
	MADE	Sanket Bendkhale	SCALE	1:10		
	DRAWING	SOH1				- REV.

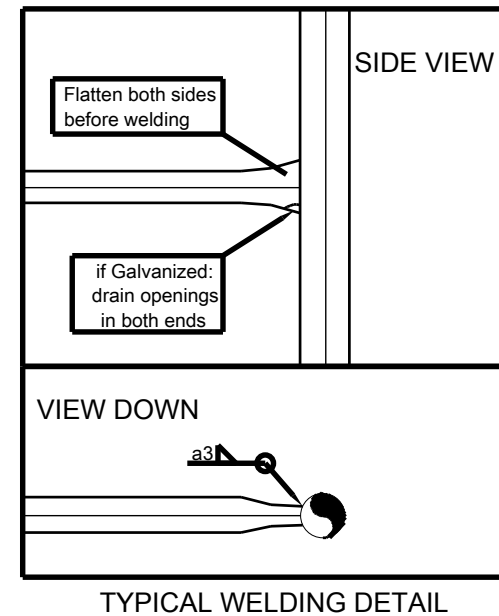
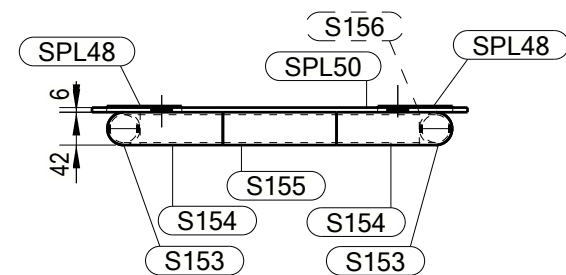
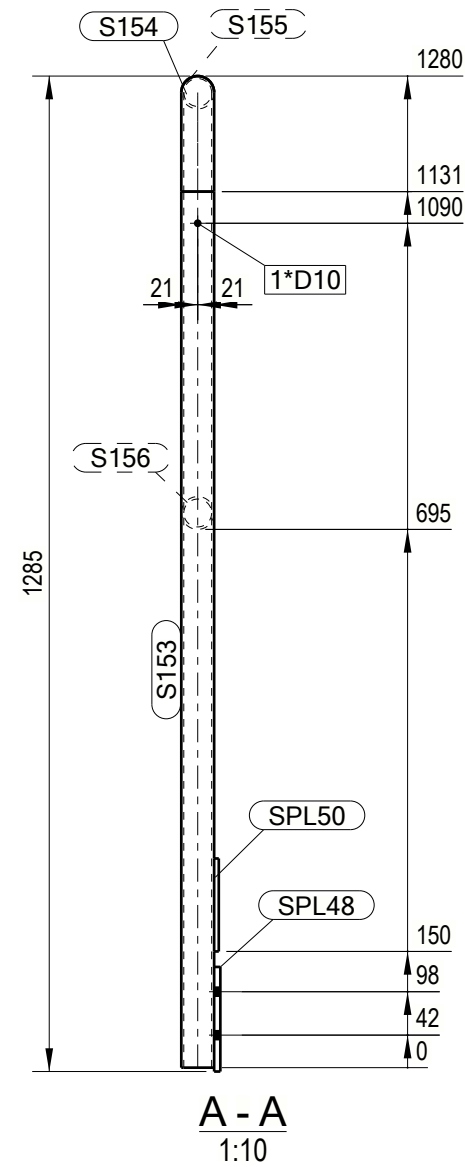
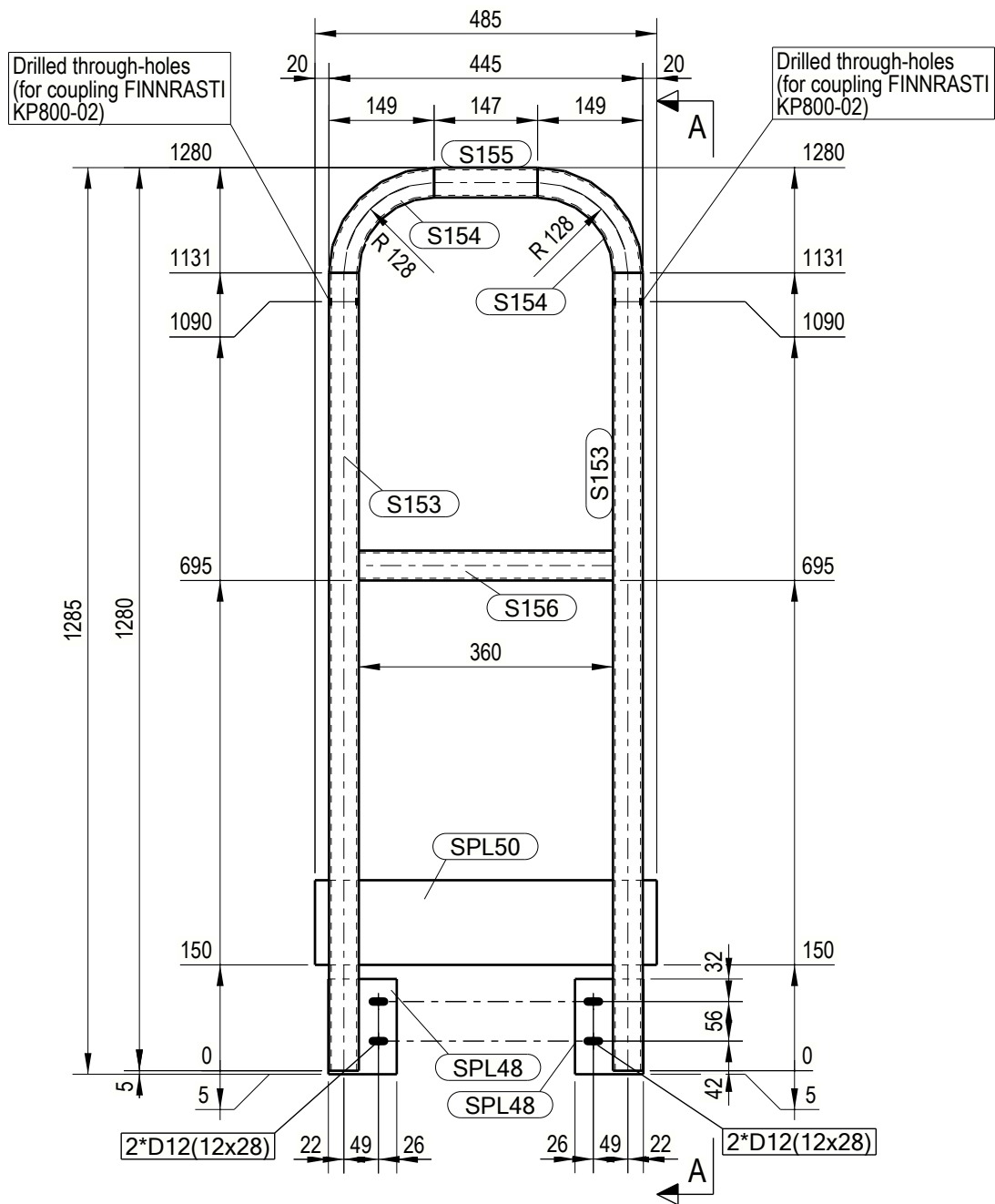
This drawing is the property of War/sita and shall neither be copied, shown nor communicated to a third party without the consent of the owner.



ASSEMBLYCODE	QTY
SOH2 @ A-B/2	1

	OBJECT	Stack Structure		
	TITLE	OUTAHANDRAIL	PROJ. ID.	P/24051
	DATE	25.11.2025	PROJECT	OKO Gold Mines - Power Generation Plant
	MADE	Sanket Bendkhale	SCALE	1:10
DRAWING		SOH2		-
		REV.		A3

This drawing is the property of Wartsila and shall neither be copied, shown nor communicated to a third party without the consent of the owner.



GENERAL NOTES:				HANDRAIL BENDING R=128, pipes center-line		
				UNMARKED WELDS a3 mm F.W. UNLESS NOTED		
MATERIAL LIST FOR ONE ASSEMBLY MK'D				SOH3		
				1 Total Pcs.		
Mark	Size	Grade	Pcs.	Length	Area	Weight
S153	CFCHS42.4*3.2	S235JR	2	1131	0.3	7.0
S154	CFCHS42.4*3.2	S235JR	2	201	0.1	1.2
S155	CFCHS42.4*3.2	S235JR	1	147	0.0	0.5
S156	CFCHS42.4*3.2	S235JR	1	360	0.0	1.1
SPL48	PL8*97	S355J2	2	135	0.1	1.6
SPL50	PL6*120	S355J2	1	485	0.1	2.7
				Total	0.6 m ²	14.2 kg

ASSEMBLYCODE	QTY
SOH3 @ A-B/1	1

OBJECT		Stack Structure	
TITLE		OUTAHANDRAIL	PROJ. ID. P/24051
DATE		25.11.2025	PROJECT OKO Gold Mines - Power Generation Plant
MADE		Sanket Bendkhale	SCALE 1:10
DRAWING		SOH3	-
			REV. A3



Confidential

This drawing is the property of Wärtsilä and shall neither be copied, shown nor communicated to a third party without the consent of the owner.