

WORKING HISTORY

DATE	REVISION	BY	REASON
01.01.74	1
01.01.74	2
01.01.74	3

NOTE: UWAGA

1. MATERIAL: SF45 C<0.28

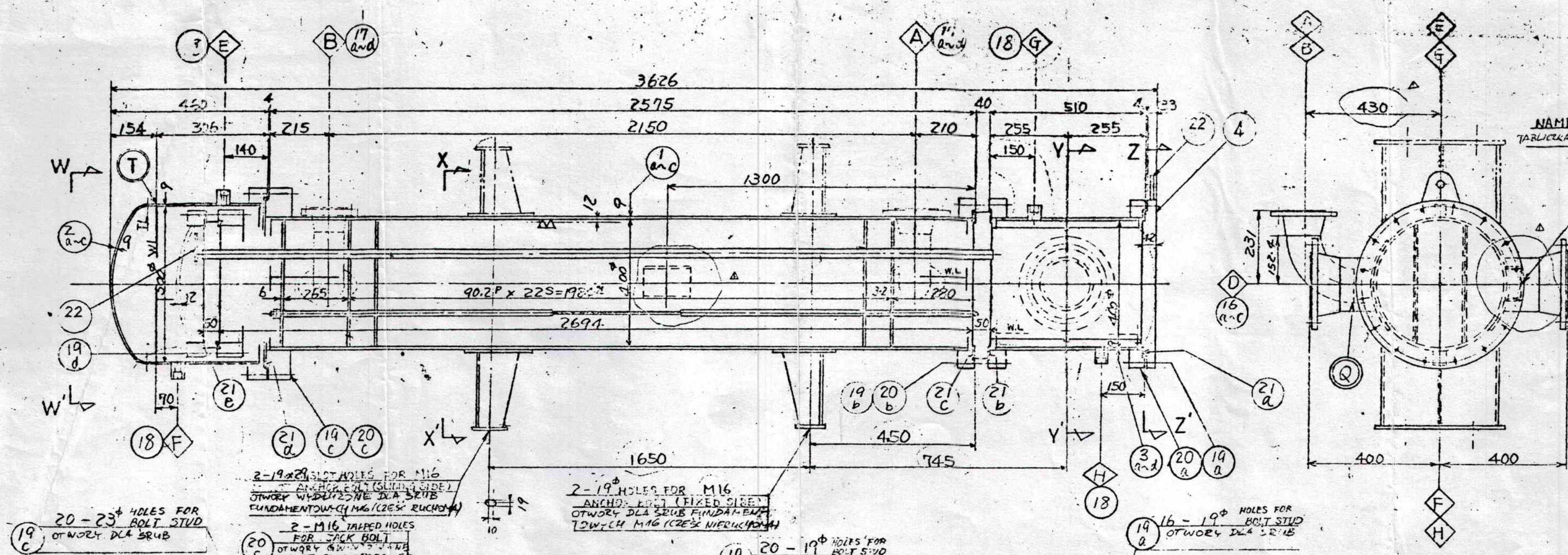
MATERIAL

FINAL

APPROVED

THIS DRAWING IS APPROVED AS TO LAYOUT AND GENERAL DESIGN ONLY. NO RESPONSIBILITY IS ASSUMED FOR THE CONSTRUCTION OF THE EQUIPMENT SHOWN HEREIN OR FOR THE OPERATION OF THE EQUIPMENT OR FOR THE RESULTS OF ANY FAILURE IN CONNECTION HEREWITH.

JAPAN GASOLINE CO., LTD.
APR - 2 1974 TOKYO, JAPAN



NAME PLATE

VALVE: EBARA SUPPLY

VALVE: EBARA SUPPLY

ASSEMBLY

ZESTAW

DETAIL LIFTING LUG

SZCZEGOL UCHWYTU TRANSPORTOWEGO

DETAIL "S"

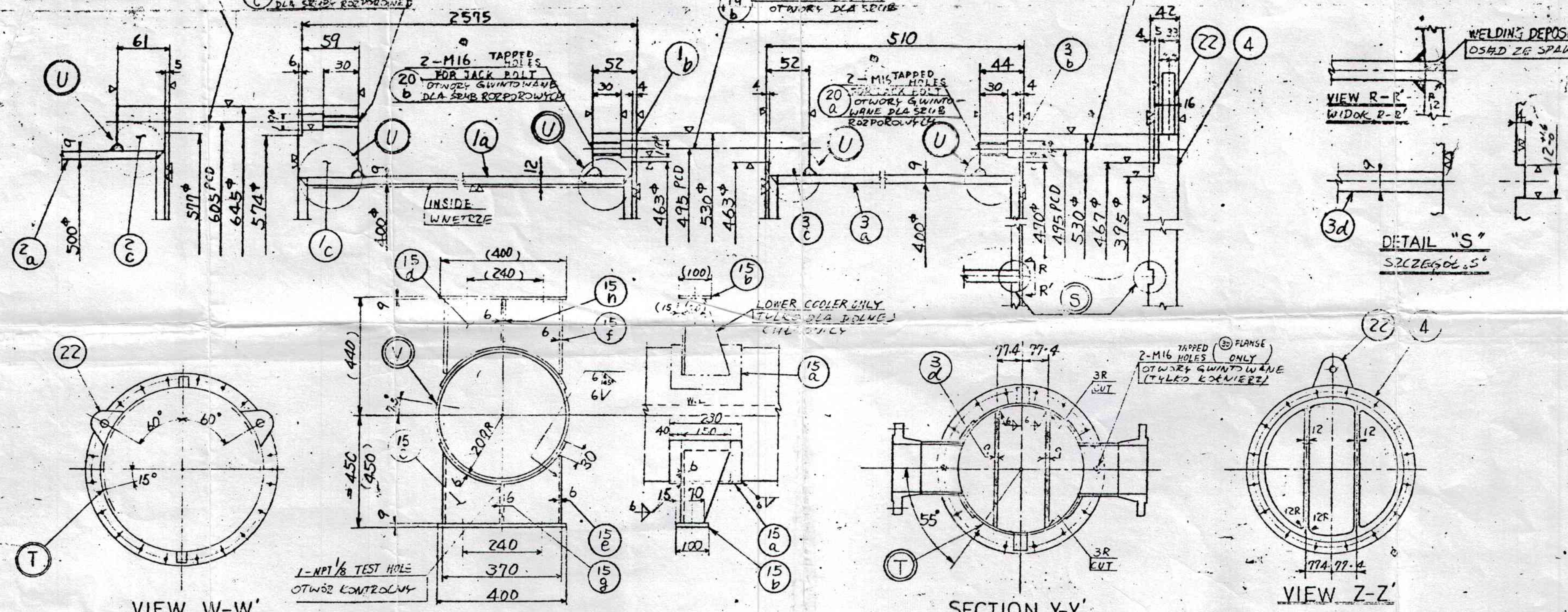
SZCZEGOL "S"

DETAIL "T"

SZCZEGOL "T"

DETAIL "U"

SZCZEGOL "U"



DESIGN DATA

FLUID MATERIAL	SHELL SIDE	TUBE SIDE
MEDIA	WODA	WODA
DESIGN PRESSURE	15 kg/cm ²	10 kg/cm ²
DESIGN TEMPERATURE	100°C	100°C
OPERATING PRESSURE	13.5 kg/cm ²	4~6 kg/cm ²
OPERATING TEMPERATURE	58.5/49 °C	25/21.6 °C
HYDRO TEST PRESSURE	22.5 kg/cm ²	15 kg/cm ²
PNEUM TEST PRESSURE	16.5 kg/cm ²	11 kg/cm ²
SURFACE AREA	15.45 m ²	
TUBE SIZE	25.0 x 2.5 x 2800	
NO. OF PASS	1	4
STRESS RELIEVED	NO	NO
RADIOGRAPHIC EX	NO	NO
JOINT EFFICIENCY	70 %	70 %
CORR. ALLOWANCE	1.6 mm	1.6 mm
INSULATION	NO	NO
CODE	ASME SECTION VIII DIV. 1	
WEIGHT	UNIT	
WEIGHT	UNIT	

NOZZLES AND CONNECTIONS

MARK	SIZE	RATING	SERVICE	REMARKS
A	4"	ANSI 150	SHELL SIDE INLET	
B	4"	ANSI 150	SHELL SIDE OUTLET	
C	6"	ANSI 150	TUBE SIDE INLET	
D	6"	ANSI 150	TUBE SIDE OUTLET	
E	3/4"	3000	VENT	
F	3/4"	3000	DRAIN	
G	3/4"	3000	VENT	
H	3/4"	3000	DRAIN	

NO.	DESCRIPTION	QTY	UNIT	REMARKS
1	LINEAR WELDING	2	m	
2	FLAT PARTITION PLATE	2	PC	
3	LIFTING LUG	3	PC	
4	JACK BOLT	2	PC	
5	JACK BOLT	2	PC	
6	JACK BOLT	2	PC	
7	JACK BOLT	2	PC	
8	JACK BOLT	2	PC	
9	JACK BOLT	2	PC	
10	JACK BOLT	2	PC	
11	JACK BOLT	2	PC	
12	JACK BOLT	2	PC	
13	JACK BOLT	2	PC	
14	JACK BOLT	2	PC	
15	JACK BOLT	2	PC	
16	JACK BOLT	2	PC	
17	JACK BOLT	2	PC	
18	JACK BOLT	2	PC	
19	JACK BOLT	2	PC	
20	JACK BOLT	2	PC	
21	JACK BOLT	2	PC	
22	JACK BOLT	2	PC	
23	JACK BOLT	2	PC	
24	JACK BOLT	2	PC	
25	JACK BOLT	2	PC	
26	JACK BOLT	2	PC	
27	JACK BOLT	2	PC	
28	JACK BOLT	2	PC	
29	JACK BOLT	2	PC	
30	JACK BOLT	2	PC	
31	JACK BOLT	2	PC	
32	JACK BOLT	2	PC	
33	JACK BOLT	2	PC	
34	JACK BOLT	2	PC	
35	JACK BOLT	2	PC	
36	JACK BOLT	2	PC	
37	JACK BOLT	2	PC	
38	JACK BOLT	2	PC	
39	JACK BOLT	2	PC	
40	JACK BOLT	2	PC	
41	JACK BOLT	2	PC	
42	JACK BOLT	2	PC	
43	JACK BOLT	2	PC	
44	JACK BOLT	2	PC	
45	JACK BOLT	2	PC	
46	JACK BOLT	2	PC	
47	JACK BOLT	2	PC	
48	JACK BOLT	2	PC	
49	JACK BOLT	2	PC	
50	JACK BOLT	2	PC	
51	JACK BOLT	2	PC	
52	JACK BOLT	2	PC	
53	JACK BOLT	2	PC	
54	JACK BOLT	2	PC	
55	JACK BOLT	2	PC	
56	JACK BOLT	2	PC	
57	JACK BOLT	2	PC	
58	JACK BOLT	2	PC	
59	JACK BOLT	2	PC	
60	JACK BOLT	2	PC	
61	JACK BOLT	2	PC	
62	JACK BOLT	2	PC	
63	JACK BOLT	2	PC	
64	JACK BOLT	2	PC	
65	JACK BOLT	2	PC	
66	JACK BOLT	2	PC	
67	JACK BOLT	2	PC	
68	JACK BOLT	2	PC	
69	JACK BOLT	2	PC	
70	JACK BOLT	2	PC	
71	JACK BOLT	2	PC	
72	JACK BOLT	2	PC	
73	JACK BOLT	2	PC	
74	JACK BOLT	2	PC	
75	JACK BOLT	2	PC	
76	JACK BOLT	2	PC	
77	JACK BOLT	2	PC	
78	JACK BOLT	2	PC	
79	JACK BOLT	2	PC	
80	JACK BOLT	2	PC	
81	JACK BOLT	2	PC	
82	JACK BOLT	2	PC	
83	JACK BOLT	2	PC	
84	JACK BOLT	2	PC	
85	JACK BOLT	2	PC	
86	JACK BOLT	2	PC	
87	JACK BOLT	2	PC	
88	JACK BOLT	2	PC	
89	JACK BOLT	2	PC	
90	JACK BOLT	2	PC	
91	JACK BOLT	2	PC	
92	JACK BOLT	2	PC	
93	JACK BOLT	2	PC	
94	JACK BOLT	2	PC	
95	JACK BOLT	2	PC	
96	JACK BOLT	2	PC	
97	JACK BOLT	2	PC	
98	JACK BOLT	2	PC	
99	JACK BOLT	2	PC	
100	JACK BOLT	2	PC	

