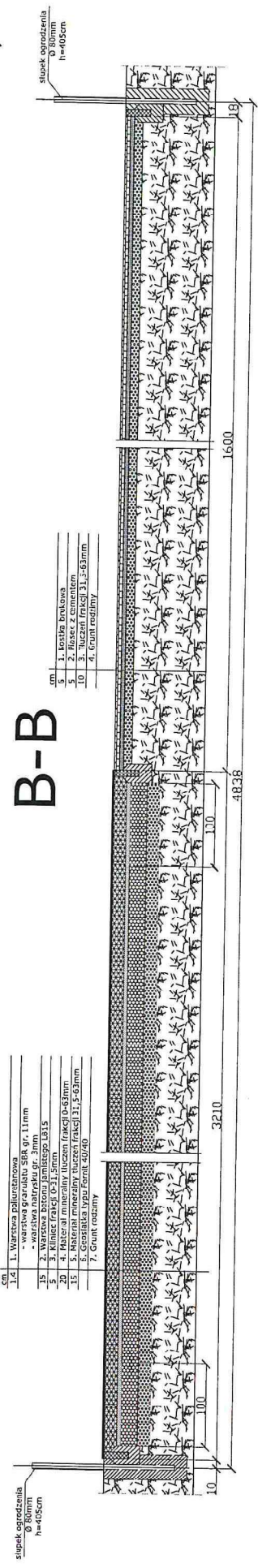
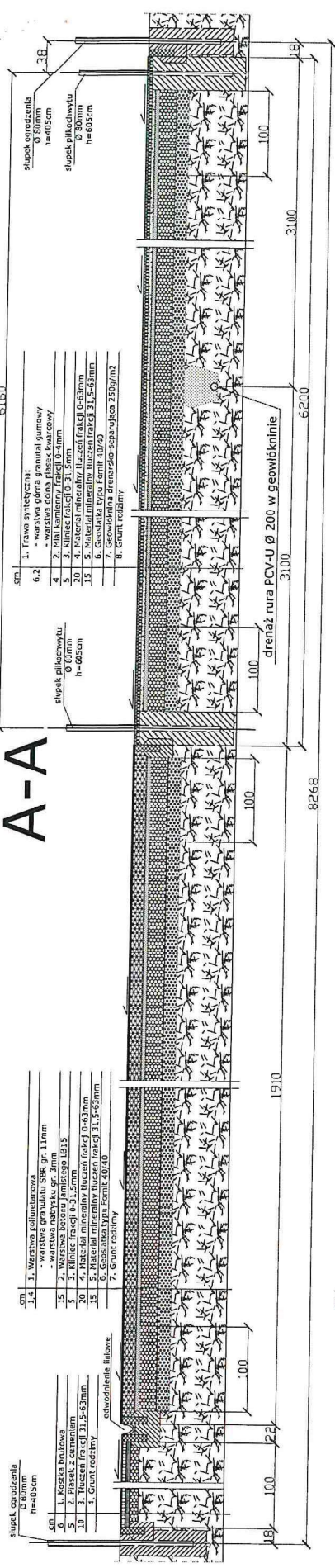
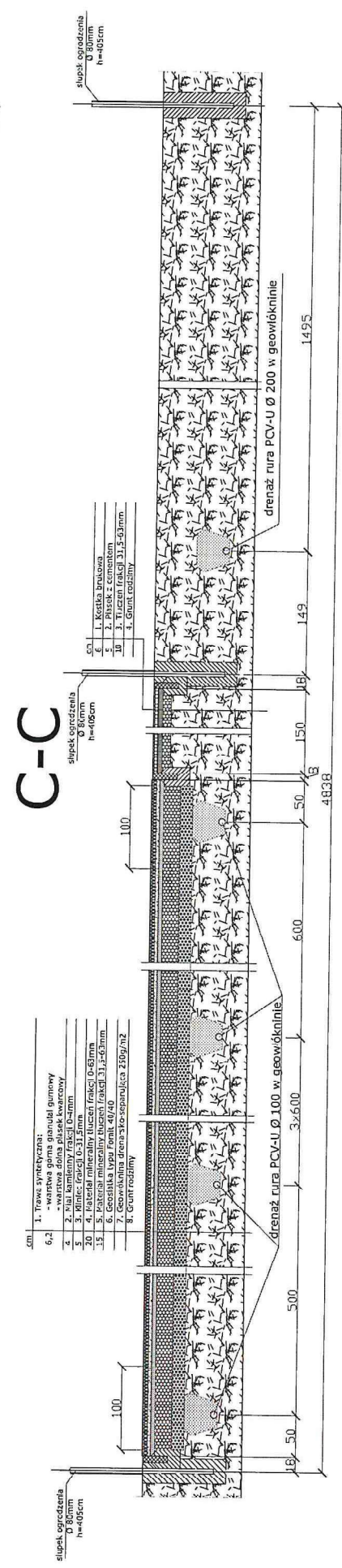
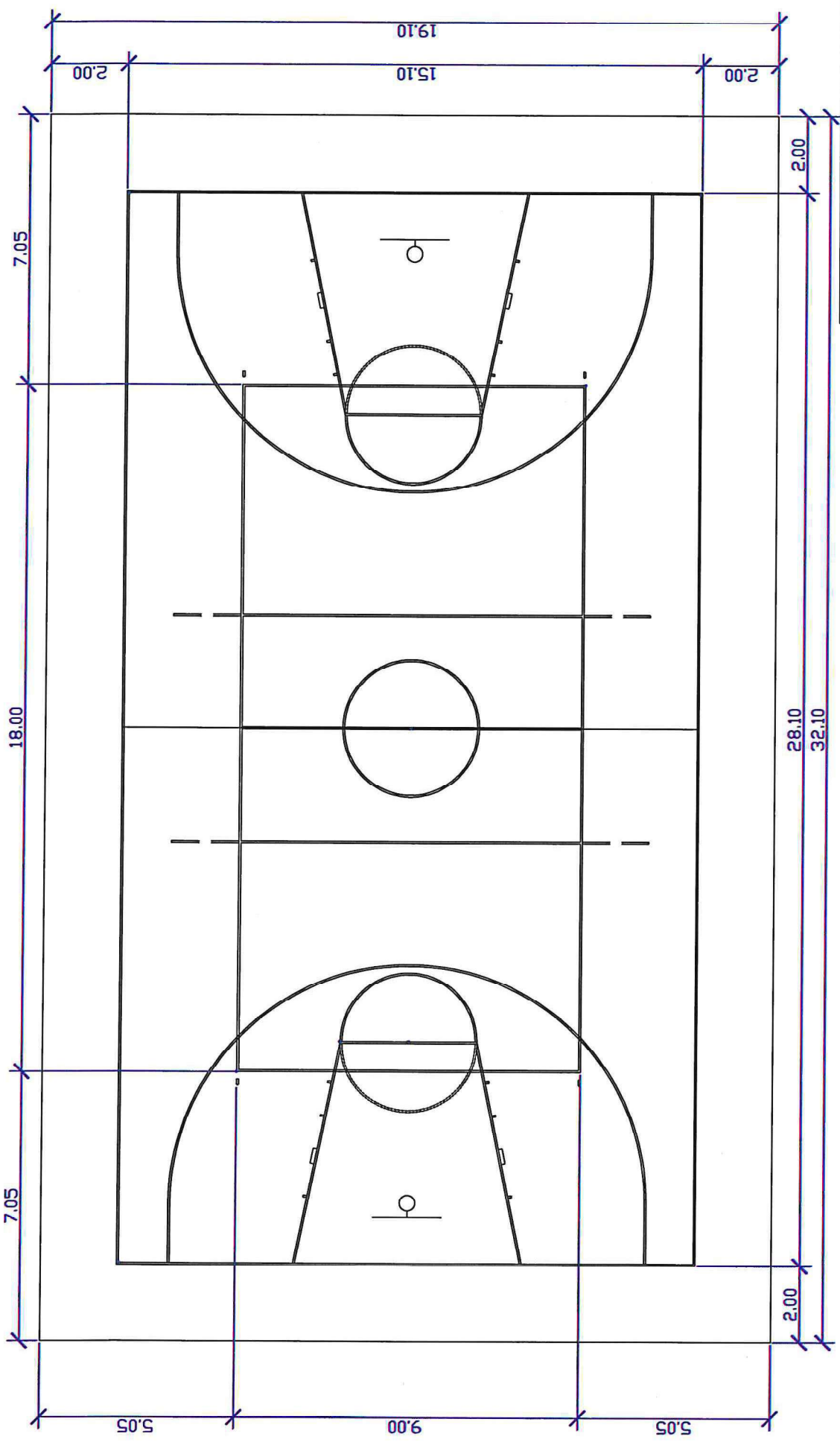


1

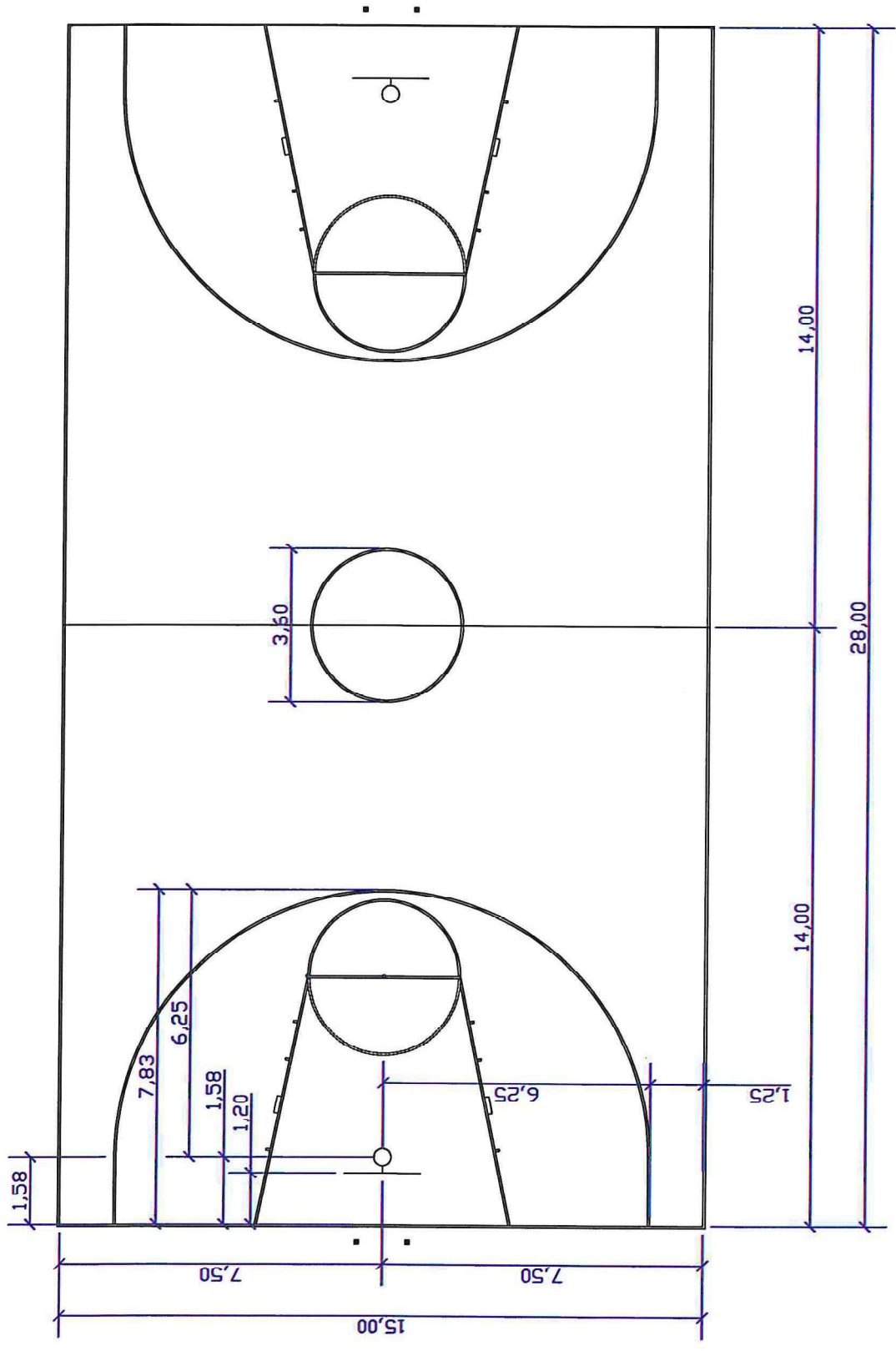
U
I
U

Architectural site plan of a sports complex. The plan shows a large rectangular area divided into several sections. On the left is a parking lot with 12 spaces, labeled "parking 12 miejsc". To its right is a building with two rectangular sections, labeled "budynek 2 części". Further right is a large green field, labeled "pole zielone", which contains a circular area and two rectangular areas. To the right of the green field is a red field, labeled "pole czerwone", which contains two circular areas. The entire complex is surrounded by a fence, labeled "ogrodzenie wys. 4m". Dimensions are given for various parts: "48.38" for the width of the green field, "32.68" for the width of the parking lot, "29.81" for the width of the building, "1.2 x 2.1m" for the entrance, "3.0 x 2.1m" for the building, and "4.0m" for the width of the parking lot. The plan is oriented with North at the top.

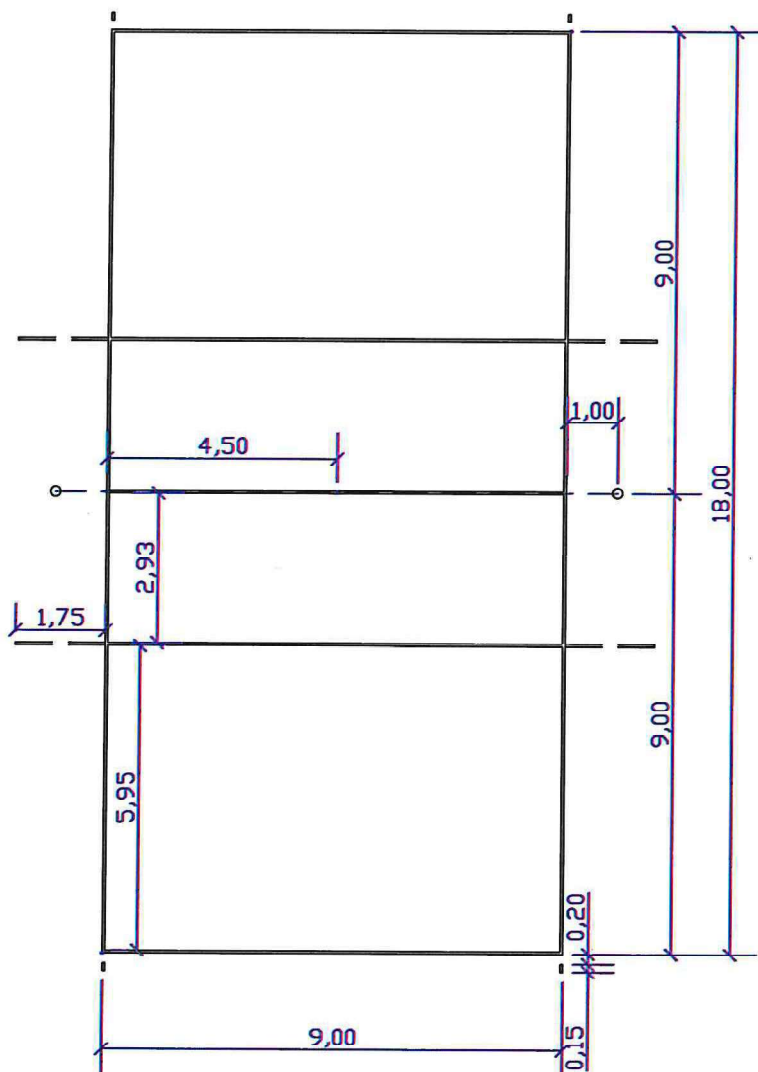
załącznik nr 1.4



zajímavost nr. 1.5



zotacznik nr 1.4

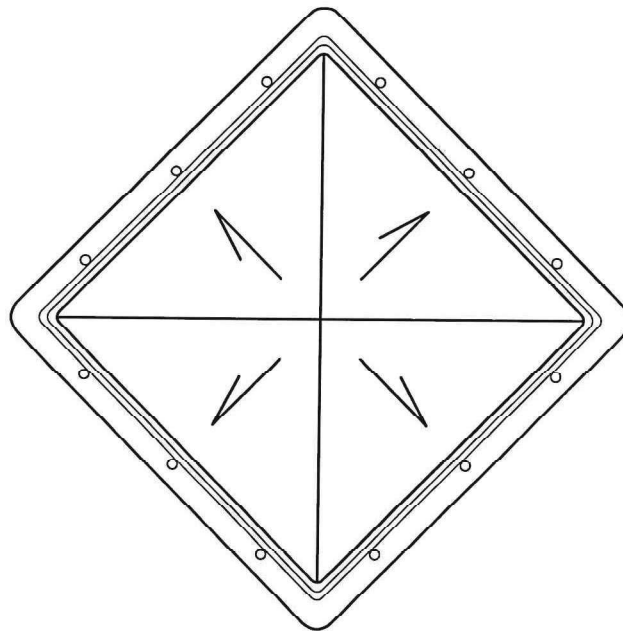


P0

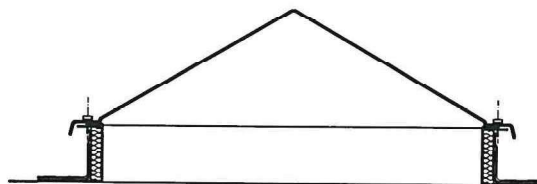
ŚWIELLIK DACHOWY

Świelik piramidowy,
stały lub otwierany

Poliwęglan komorowy,
Kopuła $U_k=1,80 \text{ W/m}^2\text{K}$
Przenikalność światła $c=67\%$
Podstawa niska laminat
poliestrowo - szklany izolowana
termicznie



RZUT skala 1:20



PRZEKRÓJ skala 1:20

P0	STANDARD+
ILOŚĆ ELEMENTÓW	10

PROJEKT ZAMIENNY